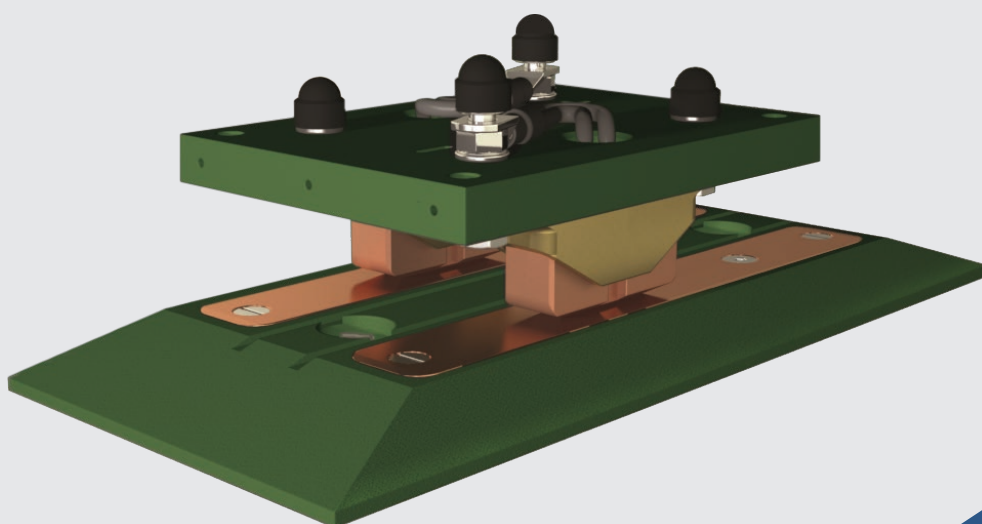




vCONDUCTOR – CHARGING CONTACTS



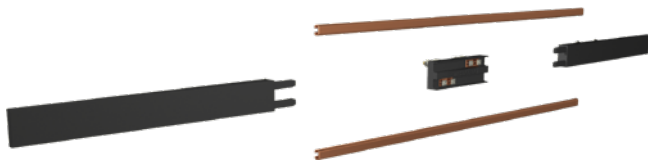
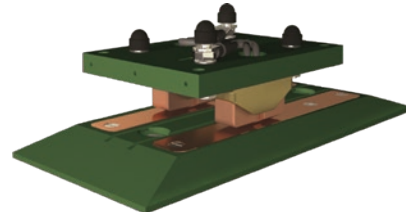
VAHLE CHARGING CONTACTS A TRULY UNIVERSAL SOLUTION

VAHLE charging contacts are designed to carry charging and control currents as well as for data communications. The VAHLE portfolio includes solutions for practically every application area – ranging from small right through to high performance requirements. With more than three decades of experience, VAHLE is a pioneer when it comes to charging contact solutions and is continuously developing its products further in accordance with market requirements.

VAHLE covers the entire range of requirements from standard solutions right through to special individual projects.

STRONG | DURABLE

When charging automatic guides vehicles in the intralogistics sector or in modern car parks where cars are manoeuvred into parking bays by parking robots, the charging contacts must be able to cope with a high number of transitions without any problems and guarantee safe charging.

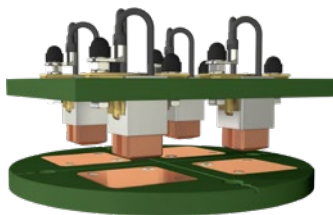
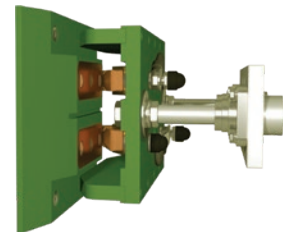


MODULAR | FLEXIBLE

In the intralogistics sector, holding times are short and the existing space must be used as effectively as possible. All these characteristics are fulfilled by charging contacts from VAHLE.

ROBUST | ADAPTED

No matter whether driverless or with operator: charging the electric forklift is always associated with time and effort. With VAHLE charging contacts, the tiresome manual connection to the power supply system is no longer necessary. The forklift simply drives up or onto the contact to start the charging process.

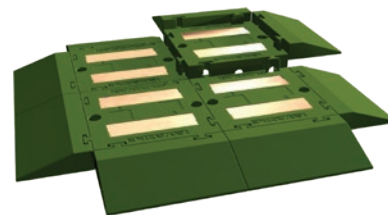


UNIVERSAL | VERSATILE

A lot of theme park rides require a power supply at entry and exit points to open the safety bars. However, automatic, freely moving theme park rides that take visitors through a fantasy world can also easily and safely be supplied with energy via VAHLE charging contacts.

COMPACT | COST-EFFECTIVE

In the age of Industry 4.0, small, self-driving vehicles are becoming increasingly important. They must be able to react flexibly to specific requirements and need to guarantee a smooth production process. This is where the smallest possible modular energy and data charging contacts provide the perfect solution.



EVERYWHERE IN USE FOR A WIDE RANGE OF APPLICATIONS



AUTOMATIC GUIDED VEHICLES



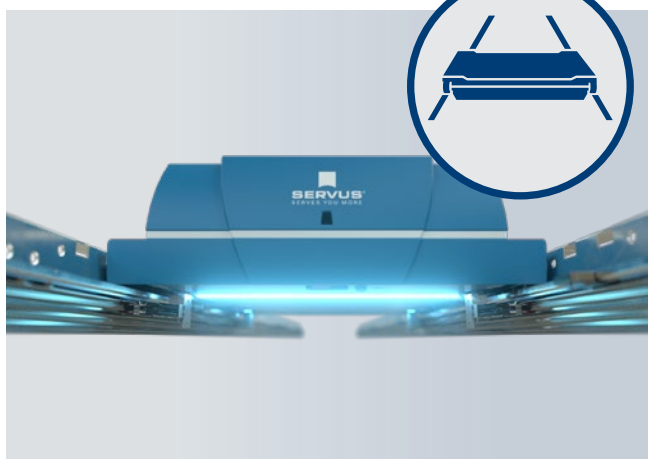
FORKLIFT CHARGING



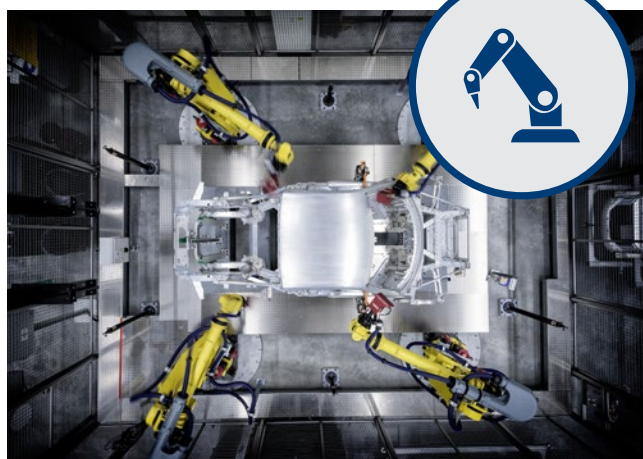
CAR PARKS



AMUSEMENT RIDES



SHUTTLE SYSTEMS



ROBOTICS

FEATURES AND SPECIFICATIONS

Our charging contacts are designed to provide reliable and consistent performance in any application. Multiple amperages and designs offer variety to suit your needs. On the following pages you will find our standard portfolio. Various possibilities of individualization, as well as completely new developments can be realized with you of course.

FEATURES

- Standard current strength of 10–600 A
- Standard transmission voltage of 12–80 V
- Single, double and multi-pole contact solutions
- Drive-on, drive-over and pressure contact designs available
- Optionally upgradeable with pilot contacts
- Very large tolerances via linear guidance elements

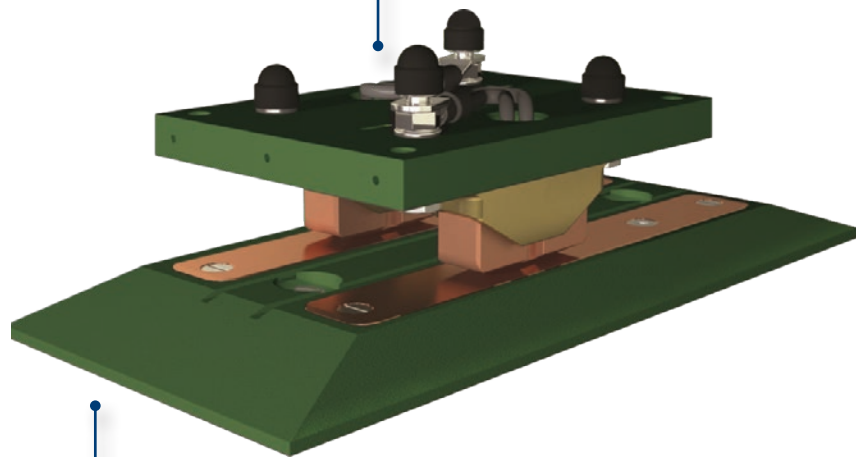
CUSTOMIZING

- Design engineering support during each project phase
- Personalised special designs for customer-specific solutions – even for smaller batch sizes (e.g. structures, dimensions, higher voltages of 230/400V and current strengths, external applications)

SYSTEM OVERVIEW

BLS CURRENT COLLECTOR

Vehicle mounted current collector, also with cleaning brushes to ensure reliable performance and even contact. Available in multi-pole versions and different current ratings.



BLK BASIS MODULE

The stationary mounted base plate is highly wear-resistant and therefore has a particularly long service life. It is available in multi-pole versions and different current ratings.

Depending on the application, the BLK basic module can also be mounted on the vehicle and the BLS current collector can be mounted stationary.

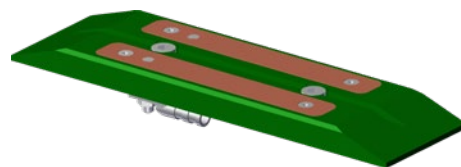
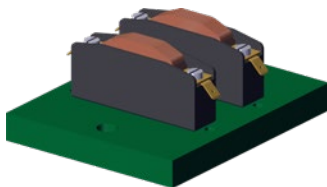
* You can download the operating instructions under vahle.com/products/vconductor/charging-contacts. Alternatively via the QR Code



STANDARD PORTFOLIO

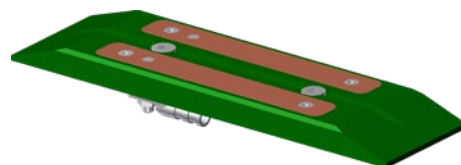
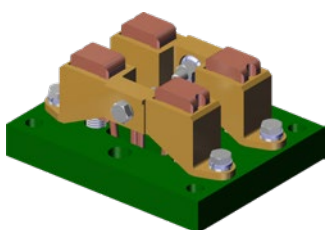
2-POLE CHARGING CONTACTS

for charging currents of 50–200 A



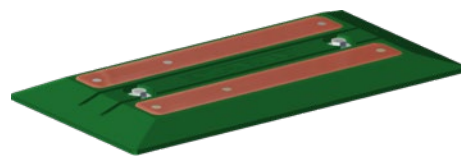
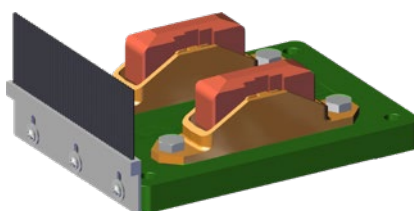
50 A VERSION

Description		Footprint Dimensions in mm*	Weight kg	Order No.
SA-BLS50-20-01	Current collector	130 x 105	0.425	590672
BLK100-2-06	Base plate	250 x 70	0.574	590736



100 A VERSION

Description		Footprint Dimensions in mm*	Weight kg	Order No.
SA-BLS100-20-01	Current collector	125 x 100	0.955	590541
BLK100-2-06	Base plate	250 x 70	0.574	590736



200 A VERSION

Description		Footprint Dimensions in mm*	Weight kg	Order No.
SA-BLS200-2-01-MS	Current collector – Plastic as milled part (green)	220 x 160	2.680	590000/00-MS
BLK200-2-01	Base plate – Plastic as milled part (green)	400 x 190	2.530	590001/00
SA-BLS200-2-01	Current collector – Plastic as moulded part (black)	220 x 160	2.127	590000/01-MS
BLK200-2-01	Base plate – Plastic as moulded part (black)	400 x 190	2.054	590001/01

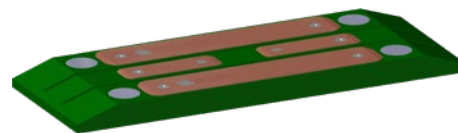
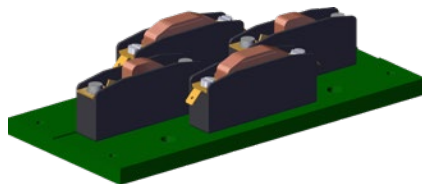
* You can download the 3d data for the respective charging contacts under vahle.com/products/vconductor/charging-contacts. Alternatively via the QR Code



STANDARD PORTFOLIO

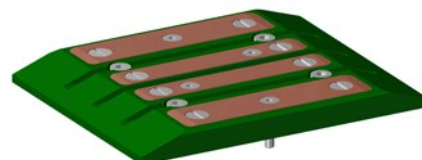
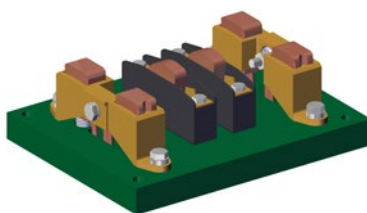
2-POLE CHARGING CONTACT INCL. ADDITIONAL PILOT FUNCTION

for charging currents of 50–200A and the transmission of control signals and data



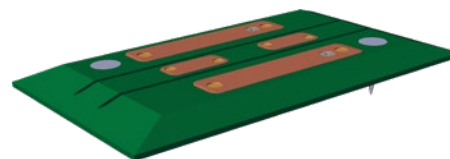
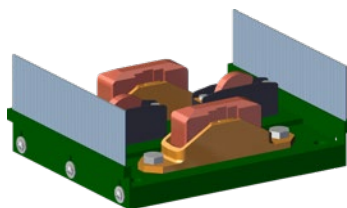
50 A VERSION

Description		Footprint Dimensions in mm*	Weight kg	Order No.
SA-BLS50-20/20-2-01	Current collector	220 x 100	0.614	590637
BLK100-2/25-2-04	Base plate	280 x 100	1.143	590624



100 A VERSION

Description		Footprint Dimensions in mm*	Weight kg	Order No.
SA-BLS100-20/20-2-01	Current collector	180 x 140	1.392	590573
BLK100-2/25-2-02	Base plate	200 x 160	1.237	590574



200 A VERSION

Description		Footprint Dimensions in mm*	Weight kg	Order No.
SA-BLS200-2B/20-2-01-MS	Current collector	220 x 190	3.330	590198/00-MS
BLK200-2/25-2-01	Base plate	400 x 230	2.718	590062

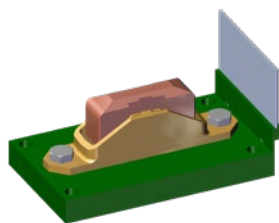
* You can download the 3d data for the respective charging contacts under vahle.com/products/vconductor/charging-contacts. Alternatively via the QR Code



STANDARD PORTFOLIO

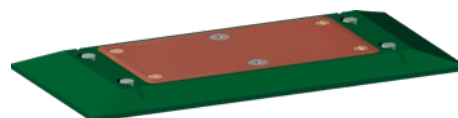
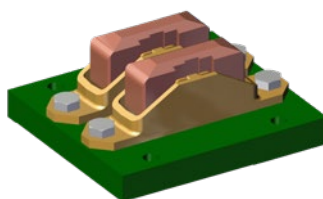
1-POLE CHARGING CONTACTS

for high currents of 200–600 A and the individual arrangement of the charging or pilot contacts



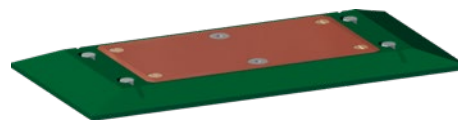
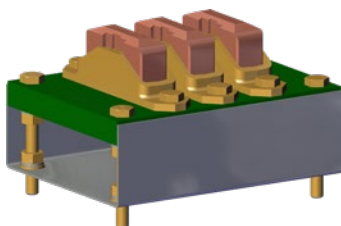
200 A VERSION

Description		Footprint Dimensions in mm*	Weight kg	Order No.
SA-BLS200-1-04	Current collector	170 x 100	1.209	590035/00-MS
BLK200-1-02	Base plate	400 x 70	1.061	590036



400 A VERSION

Description		Footprint Dimensions in mm*	Weight kg	Order No.
SA-BLS400-10-02	Current collector	160 x 145	2.355	590114
BLK600-1-01	Base plate	400 x 190	3.241	590044



600 A VERSION

Description		Footprint Dimensions in mm*	Weight kg	Order No.
SA-BLS600-1A0-01	Current collector	210 x 158	3.563	590043/00-MS
BLK600-1-01	Base plate	400 x 190	3.241	590044

* You can download the 3d data for the respective charging contacts under vahle.com/products/vconductor/charging-contacts. Alternatively via the QR Code





Paul Vahle GmbH & Co. KG

Westicker Str. 52
59174 Kamen
Germany

Fon.: +49 2307 704-0
info@vahle.de

www.vahle.com